



Therapeutics

<https://www.creative-biolabs.com/drug-discovery/therapeutics/>

## Creative Biolabs

---

### **Providing antibody function assay services and innovative assay products**

As a reliable contract research organization, Creative Biolabs is dedicated to developing antibody function assays for our global customers. We are willing to bring together years of valuable experience to explore strategic collaborations with our partners.

[Discover more](#)



## About Us

---

As a reliable contract research organization, **Creative Biolabs** is specialized in providing antibody function assays to both academia and biotech/pharmaceuticals in the field of antibody discovery. Our integrated services are supported by our senior scientists with over 25 years of experience and best-in-class equipment to enable guidance for clients through antibody and protein drug discovery challenges, from target selection to IND regulatory support.

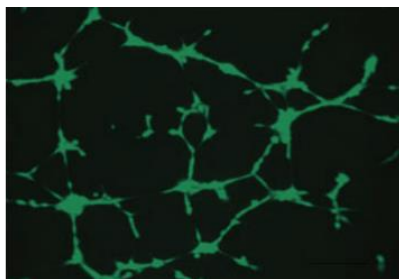
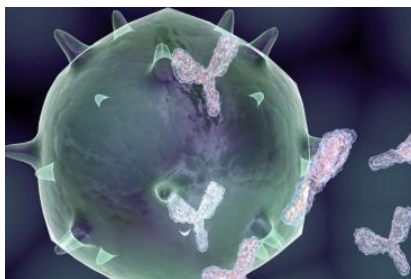
## Designed for You

---

To provide our customers with optimum function assay services, we have established, optimized, and validated a full range of cell-based function assays to characterize antibody mechanisms, providing exhaustive information on antibody potency and safety.

# Target-based Function Analysis & Characterization

- ◆ Cell Proliferation Assays
- ◆ Apoptosis and Cell Death Assays
- ◆ Cellular Apoptosis Assays
- ◆ Neutralization Assays
- ◆ Endocytosis and Internalization Assays
- ◆ Angiogenesis Investigation
- ◆ Cytokine Release Evaluation



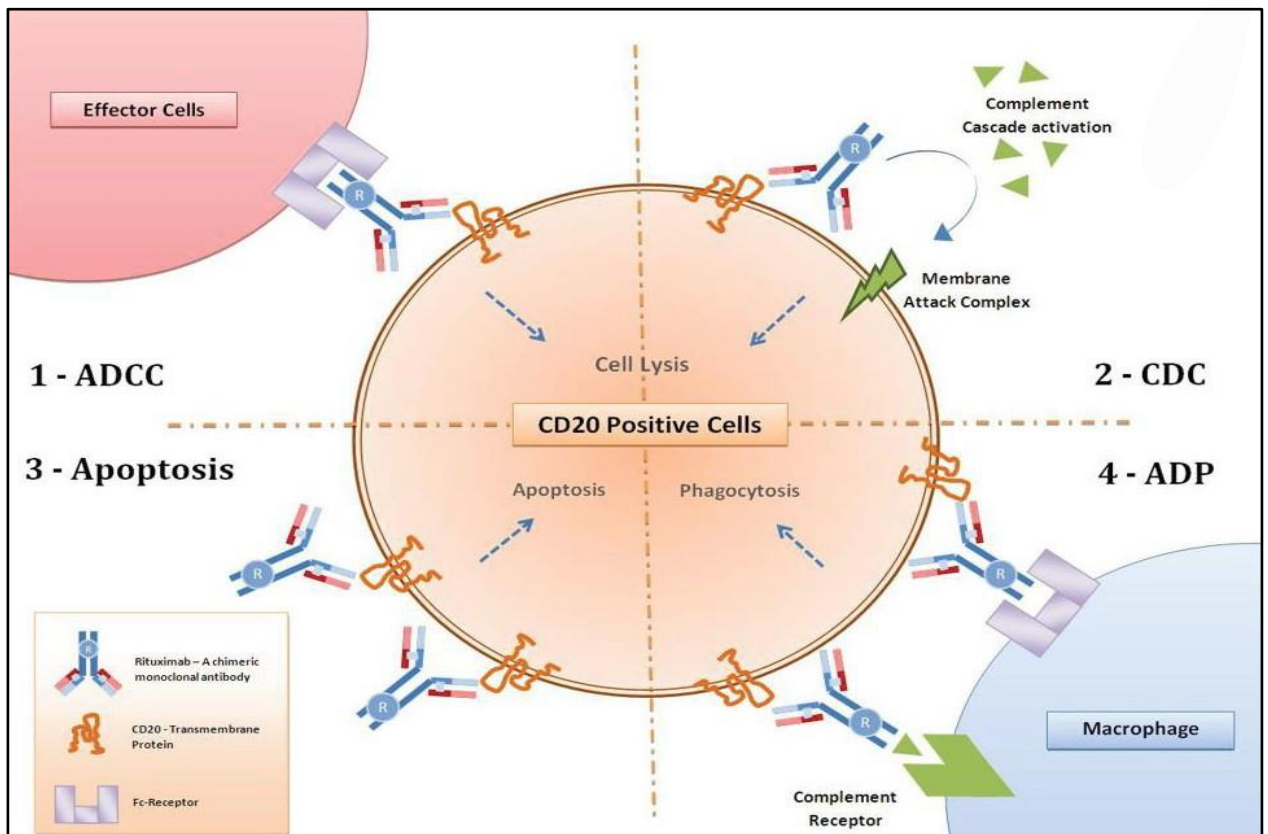
## Related Products

Cat	Product Name
<a href="#">DR-LX049</a>	Magic™ pH-Sensitive Dye, Intracellular pH Indicator-Green AM
<a href="#">DR-LX050</a>	Magic™ pH-Sensitive Dye, Intracellular pH Indicator-Red AM
<a href="#">DR-LX051</a>	Magic™ pH-Sensitive Dye, Endocytosis Indicator-Red Dextran
<a href="#">DR-LX052</a>	Magic™ pH-Sensitive Dye, Endocytosis Indicator- Green Dextran
<a href="#">DR-LX053</a>	Magic™ pH-Sensitive Dye, Epidermal Growth Factor (EGF) Conjugate-Red
<a href="#">DR-LX054</a>	Magic™ pH-Sensitive Dye, Epidermal Growth Factor (EGF) Conjugate-Green
<a href="#">DR-LX055</a>	Magic™ pH-Sensitive Dye, Transferrin Conjugate-Red
<a href="#">DR-LX056</a>	Magic™ pH-Sensitive Dye, Red STP Ester (amine-reactive)-S
<a href="#">DR-LX060</a>	Magic™ pH-Sensitive Dye, Deep Red Antibody Labeling Kit-S
<a href="#">DR-LX062</a>	Magic™ pH-Sensitive Dye, Deep Red TFP Ester-S
<a href="#">DR-LX064</a>	Magic™ pH-Sensitive Dye, Green Mouse IgG Labeling Kit
<a href="#">DR-LX065</a>	Magic™ pH-Sensitive Dye, Red Mouse IgG Labeling Kit
<a href="#">DR-LX066</a>	Magic™ pH-Sensitive Dye, Green Human IgG Labeling Kit
<a href="#">DR-LX067</a>	Magic™ pH-Sensitive Dye, Red Human IgG Labeling Kit

Please visit our website to [learn more products](#)

# Fc-mediated Effector Functional Assays

- ◆ Fc-mediated Effector Functional Assays
- ◆ Antibody-dependent Cellular Cytotoxicity (ADCC)
- ◆ Antibody-dependent Cellular Phagocytosis (ADCP)
- ◆ Complement-dependent Cytotoxicity (CDC)
- ◆ Fc Profiling Service
- ◆ FcγR, FcRn and C1q Binding Assays

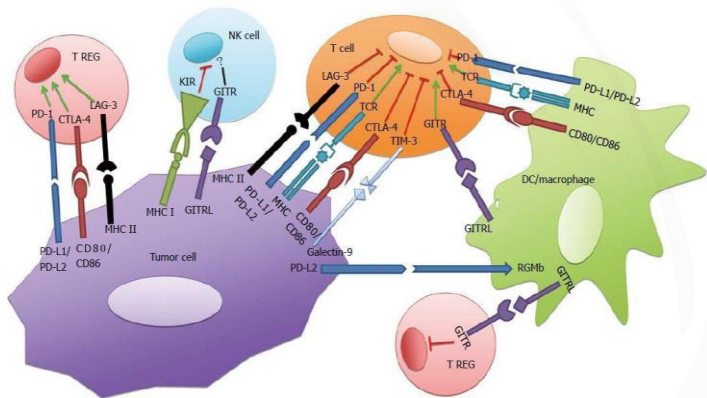


## Highlights of Our Assay Services

- ◆ Guarantee: further action will only be taken when the previous step is succeeding
- ◆ Wide range of solutions: we have come up with a complete pipeline to provide you with flexible options
- ◆ State-of-the-art equipment: your project deserves the best equipment in the field

# Immune Assays

- ◆ T Cell Stimulation and Proliferation Assays
- ◆ Cytotoxic T Cell-Based Tumor Killing Assays
- ◆ Immune Checkpoint Functional Assays
- ◆ MLR (Mixed Lymphocyte Reaction) Assays



## Related Products

Cat	Product Name
<a href="#">AK-LX001</a>	EasyMeasure™ TIM-3 Bioassay Kit
<a href="#">AK-LX002</a>	EasyMeasure™ GITR Bioassay Kit
<a href="#">AK-LX003</a>	EasyMeasure™ GITR Bioassay Kit (FcγRIIb Cells)
<a href="#">AK-LX004</a>	EasyMeasure™ OX40 Bioassay Kit
<a href="#">AK-LX005</a>	EasyMeasure™ OX40 Bioassay Kit (FcγRIIb Cells)
<a href="#">AK-LX006</a>	EasyMeasure™ CD40 Bioassay Kit
<a href="#">AK-LX007</a>	EasyMeasure™ CD40 Bioassay Kit (FcγRIIb Cells)
<a href="#">AK-LX008</a>	EasyMeasure™ CD28 Bioassay Kit (aAPC/CHO-K1 Cells)
<a href="#">AK-LX009</a>	EasyMeasure™ CD28 Bioassay Kit (FcγRIIb aAPC/CHO-K1 Cells)
<a href="#">AK-LX010</a>	EasyMeasure™ CD28 Blockade Bioassay Kit
<a href="#">AK-LX011</a>	EasyMeasure™ ICOS Bioassay Kit (aAPC/CHO-K1 Cells)
<a href="#">AK-LX012</a>	EasyMeasure™ ICOS Bioassay Kit (FcγRIIb aAPC/CHO-K1 Cells)
<a href="#">AK-LX013</a>	EasyMeasure™ LAG-3/MHCII Blockade Bioassay Kit
<a href="#">AK-LX014</a>	EasyMeasure™ PD-1+TIGIT Combination Bioassay Kit
<a href="#">AK-LX015</a>	EasyMeasure™ TIGIT/CD155 Blockade Bioassay Kit
<a href="#">AK-LX016</a>	EasyMeasure™ CTLA-4 Blockade Bioassay Kit
<a href="#">AK-LX017</a>	EasyMeasure™ PD-1/PD-L1 Blockade Bioassay Kit

Please visit our website to [learn more products](#)





**In an effort to accelerating  
the development of  
antibody drugs**

Please visit [https://www.creative-biolabs.com/  
drug-discovery/therapeutics/antibody-function-assays.htm](https://www.creative-biolabs.com/drug-discovery/therapeutics/antibody-function-assays.htm)

to find out more

Copyright © 2022 Creative Biolabs. | [Contact Us](#)