

Magic™ Membrane Protein Products

Increase Efficiency and Value with Consistent Performance

With years of experience, Creative Biolabs has established Magic™ Membrane Protein platform and developed a comprehensive list of protein products to support the development of antibody and other therapeutics. Our products are produced with high quality and batch-to-batch consistency to satisfy the rigorous standards of clients' researches. We are dedicated to bringing more value to our clients by providing stock products, more technical resources and custom protein production services.

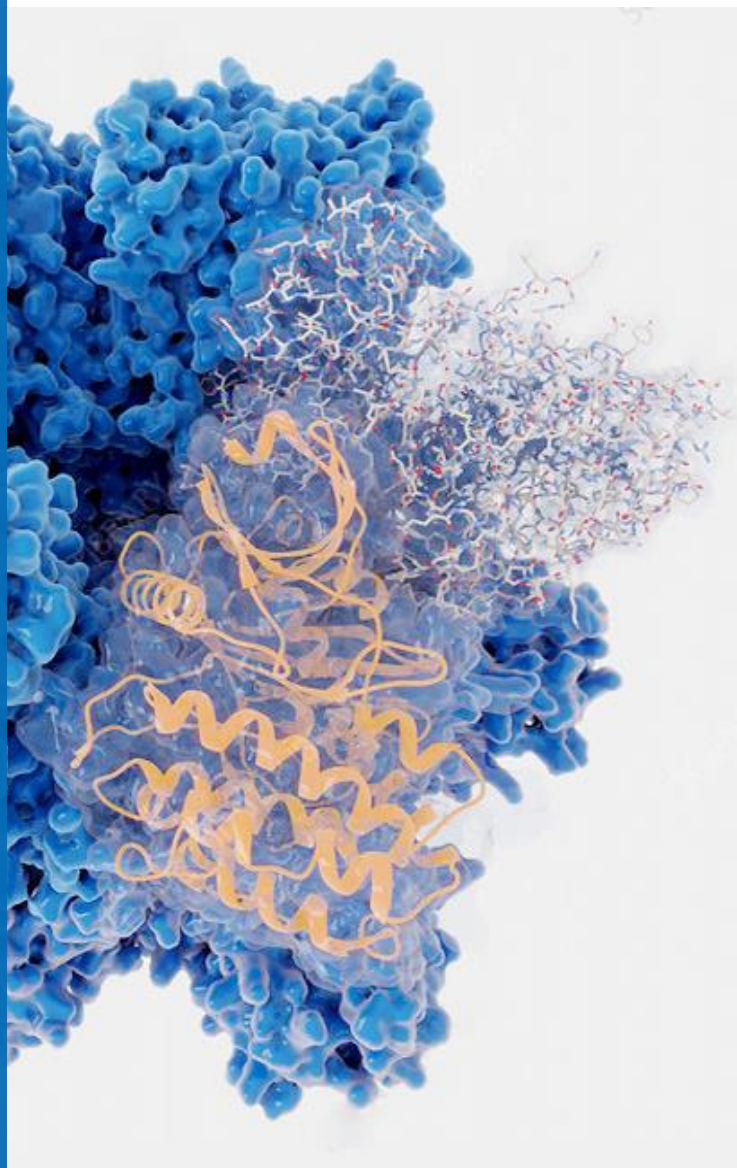


TABLE OF CONTENTS

| | |
|---|----|
| About Creative Biolabs | 3 |
| Membrane Protein Products | 5 |
| SARS-CoV-2 Related Products | 5 |
| G Protein-Coupled Receptor (GPCR) Proteins | 7 |
| Ion Channel Proteins | 9 |
| Transporter Proteins | 11 |
| Immune Checkpoint Proteins | 13 |
| CAR-T Therapy Target Proteins | 15 |
| Biomarkers and CD Proteins | 17 |
| Fc Receptor Proteins | 19 |
| Other Products | 21 |
| Our Service Platforms | 24 |
| Membrane Protein Expression | 24 |
| Membrane Protein Purification | 24 |
| Membrane Protein Production in Wheat Germ Cell-Free Expression System | 24 |
| Membrane Protein Antibody Discovery | 25 |
| Membrane Protein Stable Cell Line Generation | 25 |

Our Expertise

Established in 2004, Creative Biolabs has grown into a thriving CRO collaborating with hundreds of pharmaceutical and biotech companies as well as research laboratories. Now we extend expertise to the membrane protein (full-length and partial) expression to advance your membrane protein antibody discovery and development. We offer a comprehensive list of membrane protein (antigen) products which are all in stock.

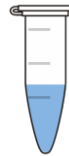
Versatile Expression Systems

With years of experience, we have established various expression platforms to facilitate your membrane protein expression, including traditional cell-based expression systems and innovative cell-free expression systems.



Cell-based expression systems

E.Coli | Yeast | Insect | 293 | CHO



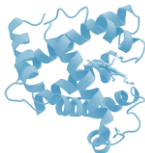
Cell-free expression systems

E.Coli | Yeast | Human | Wheat germ | Plant | Rabbit reticulocyte | PURE

Membrane Protein Format

To address challenges in membrane protein function and antibody discoveries, we provide membrane protein production in various formats, including partial domain, extracellular domain (ECD), and full-length proteins solubilized in different reagents.

Partial or ECD



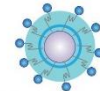
Full-length (Detergent | Liposome | Nanodisc | VLP | Polymers)



Micelles



Liposomes



Virus-like particles



Nanodiscs



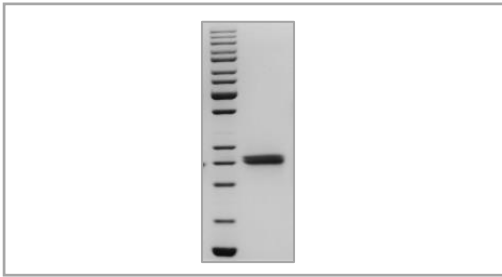
SMALPs/Polymers

Why Choose Creative Biolabs

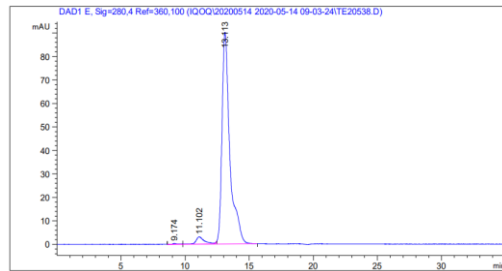
- Leader in membrane protein innovations for past 10 years
- 24-hour technical support from professional team
- High-quality membrane protein (antigen) products
- Trusted by 50+ companies/academic researchers
- Extensive experience with partial and full-length membrane proteins
- Specialized in antibody discovery and engineering

Quality Guaranteed

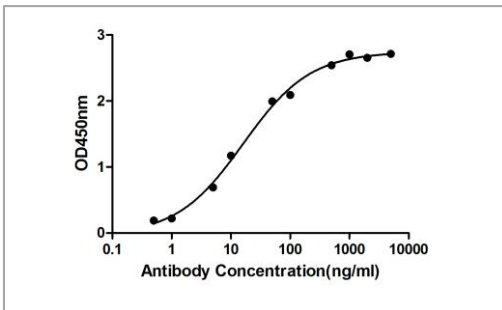
Creative Biolabs has been setting the standard in quality membrane proteins (antigens) for over 10 years. Our highly trained staff will strictly implement quality control procedures for membrane protein (antigen) production. We adhere to the transparency of all quality data at every stage.



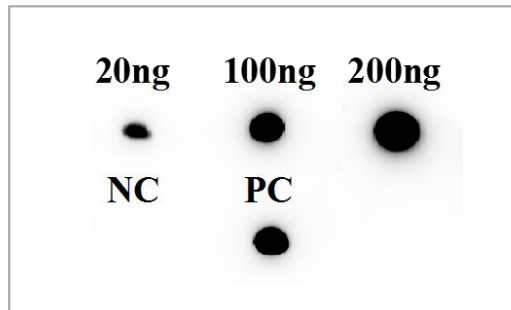
SDS-PAGE
(purity >95%)



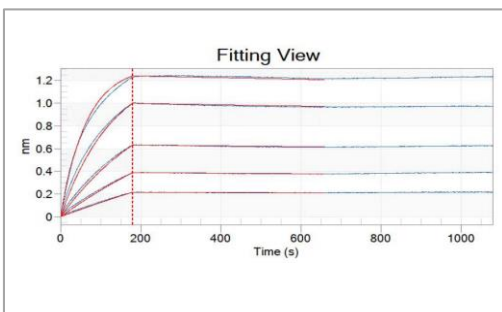
HPLC
(purity >95%)



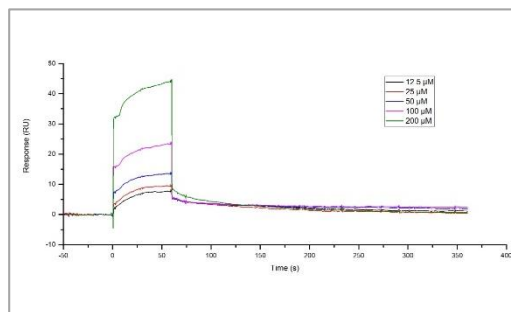
ELISA



Dot blot



BLI



SPR

- High batch-to-batch consistency
- Bioactivity validated
- High purity validated by SDS-PAGE/HPLC
- Mammalian expression system to ensure native conformation

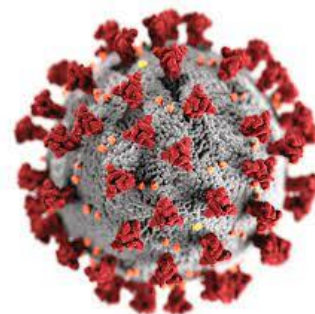
Creative Biolabs is proud to be your trusted partner in advancing your membrane protein breakthroughs, making your discoveries creative.

MEMBRANE PROTEIN PRODUCTS

SARS-CoV-2 Related Products

The pandemic caused by SARS-CoV-2 is a public health emergency of international concern. Creative Biolabs has been keeping a close eye on the development of the epidemic situation and accelerating the development of SARS-COV-2 related products.

Creative Biolabs can provide over 100 products related to SARS-CoV-2, including recombinant proteins, antibodies, virus-like particles, and reporter virus particles. Please feel free to [contact us](#) to learn more products and custom production.



SARS-CoV-2 Recombinant Proteins

| CAT# | Product Name | Mutation |
|--------------------------|--|---|
| MPX0352K | Magic™ Membrane Protein SARS2 N Mutation (R203K, G204R) (Nucleocapsid phosphoprotein) Expressed in <i>E.coli</i> for Antibody Discovery, Partial (2-419aa) | R203K, G204R |
| MPX0368K | Magic™ Membrane Protein SARS2 E (Envelope protein) Expressed in cell-free expression system, Full Length | N/A |
| MPX0369K | Magic™ Membrane Protein SARS2 N (Nucleocapsid phosphoprotein) Expressed in cell-free expression system, Full Length | N/A |
| MPX0370K | Magic™ Membrane Protein SARS2 M (Membrane glycoprotein) Expressed in cell-free expression system, Full Length | N/A |
| MPX0371K | Magic™ Membrane Protein SARS2 S (Surface glycoprotein) Expressed in cell-free expression system, Full Length | N/A |
| MPC2294K | Magic™ Membrane Protein SARS2 S Mutation (D614G) (Surface glycoprotein) Full Length | D614G |
| MPC2295K | Magic™ Membrane Protein SARS2 S Mutation (N501Y) (Surface glycoprotein) Full Length | N501Y |
| MPC2296K | Magic™ Membrane Protein SARS2 S Mutation (K417N, E484K, N501Y) (Surface glycoprotein) Full Length | K417N, E484K, N501Y |
| MPC2297K | Magic™ Membrane Protein SARS2 S Mutation (K417N, E484K, N501Y, D614G) (Surface glycoprotein) Full Length | K417N, E484K, N501Y, D614G |
| MPC2298K | Magic™ Membrane Protein SARS2 S Mutation (ΔH69/V70, ΔY144, N501Y, A570D, D614G, P681H, T716I, S982A, D1118H) (Surface glycoprotein) Full Length | ΔH69/V70, ΔY144, N501Y, A570D, D614G, P681H, T716I, S982A, D1118H |
| MPC2299K | Magic™ Membrane Protein SARS2 S Mutation (S13I, W152C, L452R, D614G) (Surface glycoprotein) Full Length | S13I, W152C, L452R, D614G |

[DISCOVER MORE SARS-COV-2 PRODUCTS](#)

MEMBRANE PROTEIN PRODUCTS

SARS-CoV-2 Reporter Virus Particles

Reporter Virus Particles (RVPs) are replication-incompetent pseudotyped virus particles. RVPs display antigenically correct virus protein on a heterologous virus core and carry a modified genome that expresses a convenient optical reporter gene (GFP or luciferase). The product is for research use only and is not approved for use in humans or in clinical diagnosis.

| CAT# | Product Name | Mutation |
|--------------------------|---|--|
| MPX1990K | Magic™ Membrane Protein SARS2 S Protein (Surface glycoprotein) Reporter Virus Particles | N/A |
| MPX1991K | Magic™ Membrane Protein SARS2 S Mutation (D614G) Protein (Surface glycoprotein) Reporter Virus Particles | D614G |
| MPX1992K | Magic™ Membrane Protein SARS2 S Mutation (L452R, E484Q, D614G) Protein (Surface glycoprotein) Reporter Virus Particles | L452R, E484Q, D614G |
| MPX1993K | Magic™ Membrane Protein SARS2 S Mutation (G142D, E154K, L452R, E484Q, P681R, Q1071H, D614G) Protein (Surface glycoprotein) Reporter Virus Particles | G142D, E154K, L452R, E484Q, P681R, Q1071H, D614G |
| MPX1994K | Magic™ Membrane Protein SARS2 S Mutation (T19R, G142D, del156/157, R158G, L452R, T478K, P681R, D950N, D614G) Protein (Surface glycoprotein) Reporter Virus Particles | T19R, G142D, del156/157, R158G, L452R, T478K, P681R, D950N, D614G |
| MPX1995K | Magic™ Membrane Protein SARS2 S Mutation (T19R, G142D, del156-157, R158G, K417N, L452R, T478K, P681R, D950N, D614G) Protein (Surface glycoprotein) Reporter Virus Particles | T19R, G142D, del156-157, R158G, K417N, L452R, T478K, P681R, D950N, D614G |
| MPX1996K | Magic™ Membrane Protein SARS2 S Mutation (G75V, T76I, R246N, del247-253, L452Q, F490S, T859N, D614G) Protein (Surface glycoprotein) Reporter Virus Particles | G75V, T76I, R246N, del247-253, L452Q, F490S, T859N, D614G |
| MPX1997K | Magic™ Membrane Protein SARS2 S Mutation (E484K, V1176F, D614G) Protein (Surface glycoprotein) Reporter Virus Particles | E484K, V1176F, D614G |
| MPX1998K | Magic™ Membrane Protein SARS2 S Mutation (T95I, ΔY144, E484K, P681H, D796H, D614G) Protein (Surface glycoprotein) Reporter Virus Particles | T95I, ΔY144, E484K, P681H, D796H, D614G |
| MPX1999K | Magic™ Membrane Protein SARS2 S Mutation (ΔY145-H146, E484K, D614G) Protein (Surface glycoprotein) Reporter Virus Particles | ΔY145-H146, E484K, D614G |
| MPX2000K | Magic™ Membrane Protein SARS2 S Mutation (ΔH69/V70, ΔY144, N501Y, A570D, P681H, T716I, S982A, D1118H, D614G) Protein (Surface glycoprotein) Reporter Virus Particles | ΔH69/V70, ΔY144, N501Y, A570D, P681H, T716I, S982A, D1118H, D614G |
| MPX2001K | Magic™ Membrane Protein SARS2 S Mutation (ΔH69/V70, ΔY144, E484K, N501Y, A570D, P681H, T716I, S982A, D1118H, D614G) Protein (Surface glycoprotein) Reporter Virus Particles | ΔH69/V70, ΔY144, E484K, N501Y, A570D, P681H, T716I, S982A, D1118H, D614G |
| MPX2002K | Magic™ Membrane Protein SARS2 S Mutation (L18F, D80A, D215G, ΔL242/A243/L244, R246I, K417N, N501Y, E484K, A701V, D614G) Protein (Surface glycoprotein) Reporter Virus Particles | L18F, D80A, D215G, ΔL242/A243/L244, R246I, K417N, N501Y, E484K, A701V, D614G |

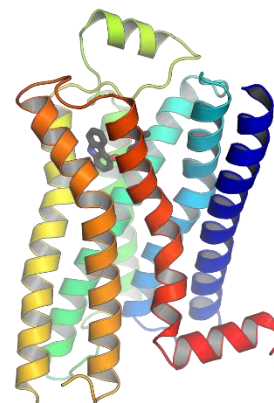
[DISCOVER MORE SARS-COV-2 PRODUCTS](#)

MEMBRANE PROTEIN PRODUCTS

G Protein-Coupled Receptor (GPCR) Proteins

G protein-coupled receptors (GPCRs) are cell surface receptors that detect molecules outside the cell and activate cellular responses. Coupling with G proteins, they are called seven-transmembrane receptors because they pass through the cell membrane seven times.

Creative Biolabs can provide GPCR protein products, including full-length GPCR protein, partial GPCR protein, and made-to-order GPCR protein for facilitating the study of GPCRs. Please feel free to [contact us](#) to learn more products and custom production.



GPCR Protein in VLPs

| CAT# | Product Name | Species | Protein Length |
|---------------------------|--|---------------|----------------|
| MPVLP-003 | Magic™ Recombinant Human A2AR Membrane Protein in Virus-Like Particles (MP-VLPs) | Human | Full Length |
| MPVLP-004 | Magic™ Recombinant Human B2AR Membrane Protein in Virus-Like Particles (MP-VLPs) | Human | Full Length |
| MPVLP-005 | Magic™ Recombinant Human CCR1 Membrane Protein in Virus-Like Particles (MP-VLPs) | Human | Full Length |
| MPVLP-006 | Magic™ Recombinant Human CCR2b Membrane Protein in Virus-Like Particles (MP-VLPs) | Human | Full Length |
| MPVLP-007 | Magic™ Recombinant Human CCR5 Membrane Protein in Virus-Like Particles (MP-VLPs) | Human | Full Length |
| MPVLP-008 | Magic™ Recombinant Mouse CCR5 Membrane Protein in Virus-Like Particles (MP-VLPs) | Mouse | Full Length |
| MPVLP-009 | Magic™ Recombinant Rhesus monkey CCR5 Membrane Protein in Virus-Like Particles (MP-VLPs) | Rhesus monkey | Full Length |
| MPVLP-010 | Magic™ Recombinant Human CCR6 Membrane Protein in Virus-Like Particles (MP-VLPs) | Human | Full Length |
| MPVLP-011 | Magic™ Recombinant Human CCR10 Membrane Protein in Virus-Like Particles (MP-VLPs) | Human | Full Length |
| MPVLP-012 | Magic™ Recombinant Human CXCR2 Membrane Protein in Virus-Like Particles (MP-VLPs) | Human | Full Length |
| MPVLP-013 | Magic™ Recombinant Human CXCR3 Membrane Protein in Virus-Like Particles (MP-VLPs) | Human | Full Length |
| MPVLP-014 | Magic™ Recombinant Human CXCR4 Membrane Protein in Virus-Like Particles (MP-VLPs) | Human | Full Length |
| MPVLP-015 | Magic™ Recombinant Mouse CXCR4 Membrane Protein in Virus-Like Particles (MP-VLPs) | Mouse | Full Length |

[DISCOVER MORE GPCR PRODUCTS](#)

MEMBRANE PROTEIN PRODUCTS

GPCR Cell-based Full Length Protein

| CAT# | Product Name | Species | Protein Length | Form |
|-------------------------|---|---------|----------------|-----------|
| MP0006F | Magic™ Membrane Protein Human CCR1 (C-C motif chemokine receptor 1) | Human | Full Length | Detergent |
| MP0007F | Magic™ Membrane Protein Human CCR2a (C-C motif chemokine receptor 2 inform a) | Human | Full Length | Detergent |
| MP0008F | Magic™ Membrane Protein Human CCR2b (C-C motif chemokine receptor 2 inform b) | Human | Full Length | Detergent |
| MP0009F | Magic™ Membrane Protein Human CCR5 (C-C motif chemokine receptor 5) | Human | Full Length | Detergent |
| MP0010F | Magic™ Membrane Protein Human CXCR4 (C-X-C motif chemokine receptor 4) | Human | Full Length | Detergent |
| MP0015F | Magic™ Membrane Protein Human GLP1R (Glucagon like peptide 1 receptor) | Human | Full Length | Detergent |
| MP0018F | Magic™ Membrane Protein Mouse HTR1A (5-hydroxytryptamine (serotonin) receptor 1A) | Mouse | Full Length | Detergent |
| MP0032F | Magic™ Membrane Protein Human CXCL12 (C-X-C motif chemokine ligand 12) | Human | Full Length | Detergent |

[DISCOVER MORE GPCR PRODUCTS](#)

GPCR Cell-free Full Length Protein

| CAT# | Product Name | Species | Protein Length | Expression System |
|-------------------------|--|---------|----------------|-------------------|
| MP0167X | Magic™ Membrane Protein Human CCR10 (C-C motif chemokine receptor 10) without tag for Antibody Discovery | Human | Full Length | Wheat Germ |
| MP0169X | Magic™ Membrane Protein Human CCR4 (C-C motif chemokine receptor 4) for Antibody Discovery | Human | Full Length | Wheat Germ |
| MP0170X | Magic™ Membrane Protein Human CCR5 (C-C motif chemokine receptor 5) without tag for Antibody Discovery | Human | Full Length | Wheat Germ |
| MP0171X | Magic™ Membrane Protein Human CCR5 (C-C motif chemokine receptor 5) with GST-tag for Antibody Discovery | Human | Full Length | Wheat Germ |
| MP0172X | Magic™ Membrane Protein Human CCR6 (C-C motif chemokine receptor 6) for Antibody Discovery | Human | Full Length | Wheat Germ |
| MP0173X | Magic™ Membrane Protein Human CCR7 (C-C motif chemokine receptor 7) for Antibody Discovery | Human | Full Length | Wheat Germ |
| MP0174X | Magic™ Membrane Protein Human CCR9 (C-C motif chemokine receptor 9) for Antibody Discovery | Human | Full Length | Wheat Germ |
| MP0440X | Magic™ Membrane Protein Human GPR119 (G protein-coupled receptor 119) for Antibody Discovery | Human | Full Length | Wheat Germ |

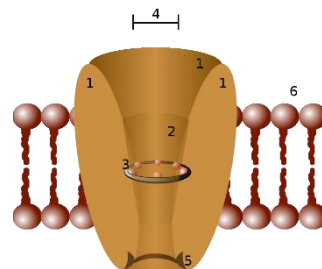
[DISCOVER MORE GPCR PRODUCTS](#)

MEMBRANE PROTEIN PRODUCTS

Ion Channel Proteins

Ion channels are pore-forming membrane proteins that allow ions to pass through the channel pore. Their functions include establishing a resting membrane potential, shaping action potentials and other electrical signals by gating the flow of ions across the cell membrane, controlling the flow of ions across secretory and epithelial cells, and regulating cell volume.

Creative Biolabs provides ion channel protein products, including full-length protein, partial protein, and made-to-order protein. Please feel free to [contact us](#) to learn more products and custom production.



Ion Channel Protein in VLPs

| CAT# | Product Name | Species | Protein Length |
|---------------------------|--|---------|----------------|
| MPVLP-022 | Magic™ Recombinant Human HV1 Membrane Protein in Virus-Like Particles (MP-VLPs) | Human | Full Length |
| MPVLP-023 | Magic™ Recombinant Human TRPC4 Membrane Protein in Virus-Like Particles (MP-VLPs) | Human | Full Length |
| MPVLP-024 | Magic™ Recombinant Human TRPM4 Membrane Protein in Virus-Like Particles (MP-VLPs) | Human | Full Length |
| MPVLP-025 | Magic™ Recombinant Human K2P1.1 Membrane Protein in Virus-Like Particles (MP-VLPs) | Human | Full Length |
| MPVLP-026 | Magic™ Recombinant Human K2P4.1 Membrane Protein in Virus-Like Particles (MP-VLPs) | Human | Full Length |
| MPVLP-027 | Magic™ Recombinant Human P2X2 Membrane Protein in Virus-Like Particles (MP-VLPs) | Human | Full Length |

[DISCOVER MORE ION CHANNEL PRODUCTS](#)

Ion Channel Cell-based Full Length Protein

| CAT# | Product Name | Species | Protein Length | Form |
|--------------------------|--|---------|----------------|--------------------------------|
| MPC0555K | Magic™ Membrane Protein Human GRIA1 (Glutamate ionotropic receptor AMPA type subunit 1) Full Length | Human | Full Length | Based on specific requirements |
| MPC0577K | Magic™ Membrane Protein Human KCNA1 (Potassium voltage-gated channel subfamily A member 1) Full Length | Human | Full Length | Based on specific requirements |

[DISCOVER MORE ION CHANNEL PRODUCTS](#)

MEMBRANE PROTEIN PRODUCTS

Ion Channel Cell-based Full Length Protein

| CAT# | Product Name | Species | Protein Length | Form |
|-------------------------|--|---------|----------------|-----------|
| MPO019F | Magic™ Membrane Protein Mouse Kcnj1 (Potassium inwardly-rectifying channel, subfamily J, member 1) | Mouse | Full Length | Detergent |
| MP1208J | Magic™ Membrane Protein Human KCNJ5 (Potassium inwardly rectifying channel subfamily J member 5) for Antibody Discovery | Human | Full Length | Detergent |
| MP1226J | Magic™ Membrane Protein Human KCNJ6 (Potassium inwardly rectifying channel subfamily J member 6) expressed in HEK293T for Antibody Discovery | Human | Full Length | Detergent |
| MP1225J | Magic™ Membrane Protein Human KCNK17 (Potassium two pore domain channel subfamily K member 17) for Antibody Discovery | Human | Full Length | Detergent |
| MP1237J | Magic™ Membrane Protein Human KCNQ4 (Potassium voltage-gated channel subfamily Q member 4) for Antibody Discovery | Human | Full Length | Detergent |
| MP1243J | Magic™ Membrane Protein Human KCNJ9 (Potassium inwardly rectifying channel subfamily J member 9) for Antibody Discovery | Human | Full Length | Detergent |

[DISCOVER MORE ION CHANNEL PRODUCTS](#)

Ion Channel Cell-free Full Length Protein

| CAT# | Product Name | Species | Protein Length | Expression System |
|--------------------------|---|---------|----------------|-------------------|
| MPX0935K | Magic™ Membrane Protein Human KCNJ10 (Potassium inwardly rectifying channel subfamily J member 10) Expressed in vitro <i>E.coli</i> expression system, Full Length | Human | Full Length | <i>E.coli</i> |
| MPX1713K | Magic™ Membrane Protein Mouse Kcnj13 (Potassium inwardly-rectifying channel, subfamily J, member 13) Expressed in vitro <i>E.coli</i> expression system, Full Length | Mouse | Full Length | <i>E.coli</i> |
| MPX1714K | Magic™ Membrane Protein Human KCNJ13 (Potassium inwardly rectifying channel subfamily J member 13) Expressed in vitro <i>E.coli</i> expression system, Full Length | Human | Full Length | <i>E.coli</i> |
| MPX1738K | Magic™ Membrane Protein Human KCNJ15 (Potassium inwardly rectifying channel subfamily J member 15) Expressed in vitro <i>E.coli</i> expression system, Full Length | Human | Full Length | <i>E.coli</i> |
| MPX1765K | Magic™ Membrane Protein Human KCNJ11 (Potassium inwardly rectifying channel subfamily J member 11) Expressed in vitro <i>E.coli</i> expression system, Full Length | Human | Full Length | <i>E.coli</i> |
| MPX1823K | Magic™ Membrane Protein Human KCNJ6 (Potassium inwardly rectifying channel subfamily J member 6) Expressed in vitro <i>E.coli</i> expression system, Full Length | Human | Full Length | <i>E.coli</i> |

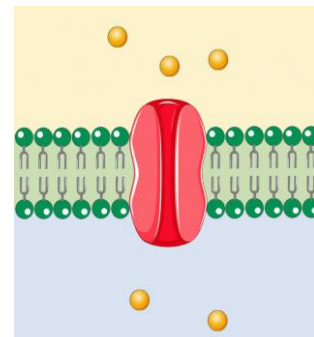
[DISCOVER MORE ION CHANNEL PRODUCTS](#)

MEMBRANE PROTEIN PRODUCTS

Transporter Proteins

A membrane transport protein is a membrane protein involved in the movement of ions, small molecules, and macromolecules, such as another protein, across a biological membrane. The proteins may assist in the movement of substances by facilitated diffusion or active transport.

Creative Biolabs provides transporter membrane protein products, including full-length protein, partial protein, and made-to-order protein. Please feel free to [contact us](#) to learn more products and custom production.



Transporter Cell-based Full Length Protein

| CAT# | Product Name | Species | Protein Length | Form |
|-------------------------|--|---------|----------------|-----------|
| MP0106J | Magic™ Membrane Protein Human SLC35G2 (Solute carrier family 35 member G2) for Antibody Discovery | Human | Full Length | Detergent |
| MP0146J | Magic™ Membrane Protein Human SLC34A2 (Solute carrier family 34 member 2) for Antibody Discovery | Human | Full Length | Detergent |
| MP0157J | Magic™ Membrane Protein Human SLC39A4 (Solute carrier family 39 member 4) for Antibody Discovery | Human | Full Length | Detergent |
| MP0173J | Magic™ Membrane Protein Human SLC18A2 (Solute carrier family 18 member A2) for Antibody Discovery | Human | Full Length | Detergent |
| MP0185J | Magic™ Membrane Protein Human SLC14A1 (Solute carrier family 14 member 1 (Kidd blood group)) for Antibody Discovery | Human | Full Length | Detergent |
| MP0210J | Magic™ Membrane Protein Human SLC29A1 (Solute carrier family 29 member 1 (Augustine blood group)) for Antibody Discovery | Human | Full Length | Detergent |
| MP0219J | Magic™ Membrane Protein Human TRARG1 (Trafficking regulator of GLUT4 (SLC2A4) 1) for Antibody Discovery | Human | Full Length | Detergent |
| MP0315J | Magic™ Membrane Protein Human SLC27A2 (Solute carrier family 27 member 2) | Human | Full Length | Detergent |
| MP0350J | Magic™ Membrane Protein Human SLC19A3 (Solute carrier family 19 member 3) | Human | Full Length | Detergent |
| MP0361J | Magic™ Membrane Protein Human SLC44A4 (Solute carrier family 44 member 4) | Human | Full Length | Detergent |
| MP0384J | Magic™ Membrane Protein Human SLC30A7 (Solute carrier family 30 member 7) | Human | Full Length | Detergent |

[DISCOVER MORE TRANSPORTER PRODUCTS](#)

MEMBRANE PROTEIN PRODUCTS

Transporter Cell-free Full Length Protein

| CAT# | Product Name | Species | Protein Length | Expression System |
|-------------------------|--|---------|----------------|-------------------|
| MP1157X | Magic™ Membrane Protein Human SLC1A1 (Solute carrier family 1 member 1) for Antibody Discovery | Human | Full Length | Wheat Germ |
| MP1158X | Magic™ Membrane Protein Human SLC1A2 (Solute carrier family 1 member 2) for Antibody Discovery | Human | Full Length | Wheat Germ |
| MP1159X | Magic™ Membrane Protein Human SLC1A3 (Solute carrier family 1 member 3, 1-574 aa) for Antibody Discovery | Human | Full Length | Wheat Germ |
| MP1160X | Magic™ Membrane Protein Human SLC1A3 (Solute carrier family 1 member 3, 1-542 aa) for Antibody Discovery | Human | Full Length | Wheat Germ |
| MP1161X | Magic™ Membrane Protein Human SLC1A5 (Solute carrier family 1 member 5) for Antibody Discovery | Human | Full Length | Wheat Germ |
| MP1162X | Magic™ Membrane Protein Human SLC1A7 (Solute carrier family 1 member 7) for Antibody Discovery | Human | Full Length | Wheat Germ |
| MP1139X | Magic™ Membrane Protein Human SLC10A1 (Solute carrier family 10 member 1) without tag for Antibody Discovery | Human | Full Length | Wheat Germ |
| MP1140X | Magic™ Membrane Protein Human SLC10A2 (Solute carrier family 10 member 2) for Antibody Discovery | Human | Full Length | Wheat Germ |
| MP1141X | Magic™ Membrane Protein Human SLC10A4 (Solute carrier family 10 member 4) for Antibody Discovery | Human | Full Length | Wheat Germ |
| MP1142X | Magic™ Membrane Protein Human SLC10A6 (Solute carrier family 10 member 6) for Antibody Discovery | Human | Full Length | Wheat Germ |
| MP1143X | Magic™ Membrane Protein Human SLC11A1 (Solute carrier family 11 member 1) for Antibody Discovery | Human | Full Length | Wheat Germ |
| MP1144X | Magic™ Membrane Protein Human SLC12A1 (Solute carrier family 12 member 1) for Antibody Discovery | Human | Full Length | Wheat Germ |
| MP1145X | Magic™ Membrane Protein Human SLC12A8 (Solute carrier family 12 member 8) for Antibody Discovery | Human | Full Length | Wheat Germ |
| MP1181X | Magic™ Membrane Protein Human SLC25A16 (Solute carrier family 25 member 16) for Antibody Discovery | Human | Full Length | Wheat Germ |
| MP1191X | Magic™ Membrane Protein Human SLC25A4 (Solute carrier family 25 member 4) for Antibody Discovery | Human | Full Length | Wheat Germ |
| MP1204X | Magic™ Membrane Protein Human SLC2A2 (Solute carrier family 2 member 2) for Antibody Discovery | Human | Full Length | Wheat Germ |
| MP1209X | Magic™ Membrane Protein Human SLC30A5 (Solute carrier family 30 member 5) for Antibody Discovery | Human | Full Length | Wheat Germ |
| MP1146X | Magic™ Membrane Protein Human SLC13A3 (Solute carrier family 13 member 3) for Antibody Discovery | Human | Full Length | Wheat Germ |

[DISCOVER MORE TRANSPORTER PRODUCTS](#)

MEMBRANE PROTEIN PRODUCTS

Immune Checkpoint Proteins

Immune checkpoint proteins are regulators of the immune system. These pathways are crucial for self-tolerance, which prevents the immune system from attacking cells indiscriminately. Some cancers can protect themselves from attack by stimulating immune checkpoint targets.



Creative Biolabs provides immune checkpoints protein products for facilitating the development of therapeutic antibodies. Please feel free to [contact us](#) to learn more products and custom production.

Immune Checkpoint Full Length Protein

| CAT# | Target | Product Name | Species | Protein Length |
|--------------------------|------------|---|---------|----------------|
| MP0325J | PD-1 | Magic™ Membrane Protein Human PDCD1 (Programmed cell death 1) | Human | Full Length |
| MP0578J | PD-L1 | Magic™ Membrane Protein Human CD274 (CD274 molecule) | Human | Full Length |
| MP0706J | B7-H3 | Magic™ Membrane Protein Human CD276 (CD276 molecule) | Human | Full Length |
| MPX0982K | CD80 | Magic™ Membrane Protein Human CD80 (CD80 molecule) Expressed in vitro <i>E.coli</i> expression system, Full Length of Mature Protein | Human | Full Length |
| MP0830J | CD80 | Magic™ Membrane Protein Human CD80 (CD80 molecule) | Human | Full Length |
| MPX3727K | CTLA4 | Magic™ Membrane Protein Human CTLA4 (Cytotoxic T-lymphocyte associated protein 4) Expressed in vitro <i>E.coli</i> expression system, Full Length of Mature Protein | Human | Full Length |
| MP0747J | SIRP alpha | Magic™ Membrane Protein Human SIRPA (Signal regulatory protein alpha) | Human | Full Length |
| MPC4055K | PD-1 | Magic™ Membrane Protein Human PDCD1 (Programmed cell death 1) Full Length | Human | Full Length |
| MPC2344K | PD-L1 | Magic™ Membrane Protein Human CD274 (CD274 molecule) Full Length | Human | Full Length |
| MPC3496K | B7-H3 | Magic™ Membrane Protein Human CD276 (CD276 molecule) Full Length | Human | Full Length |
| MPC1652K | CTLA4 | Magic™ Membrane Protein Human CTLA4 (Cytotoxic T-lymphocyte associated protein 4) Full Length | Human | Full Length |
| MPC2478K | SIRP alpha | Magic™ Membrane Protein Human SIRPA (Signal regulatory protein alpha) Full Length | Human | Full Length |

[DISCOVER MORE IMMUNE CHECKPOINT PRODUCTS](#)

Immune Checkpoint Partial Protein

MEMBRANE PROTEIN PRODUCTS

| CAT# | Target | Product Name | Species | Protein Length |
|--------------------------|--------|--|---------|----------------|
| MPX0745K | PD-1 | Magic™ Membrane Protein Human PDCD1 (Programmed cell death 1) Expressed in HEK293 for Antibody Discovery, Partial (25-168aa) | Human | Partial |
| MP1281J | PD-L1 | Magic™ Membrane Protein Human CD274 (CD274 molecule, residue 19-239aa) for Antibody Discovery | Human | Partial |
| MP0071Q | PD-L1 | Magic™ Membrane Protein Human CD274 (CD274 molecule, residues 19-290aa) expressed in Sf9 for Antibody Discovery | Human | Partial |
| MP1508J | B7-H3 | Magic™ Membrane Protein Human CD276 (CD276 molecule, 29-245aa) for Antibody Discovery | Human | Partial |
| MPX0575K | B7-H3 | Magic™ Membrane Protein Human CD276 (CD276 molecule) Expressed in NS0 for Antibody Discovery, Partial (29-245aa) | Human | Partial |
| MP1488J | CTLA4 | Magic™ Membrane Protein Human CTLA4 (Cytotoxic T-lymphocyte associated protein 4, 36-161aa) for Antibody Discovery | Human | Partial |
| MPX0643K | B7-H4 | Magic™ Membrane Protein Human VTCN1 (V-set domain containing T cell activation inhibitor 1) Expressed in NS0 for Antibody Discovery, Partial (29-258aa) | Human | Partial |
| MPX0644K | B7-H4 | Magic™ Membrane Protein Human VTCN1 (V-set domain containing T cell activation inhibitor 1) Expressed in HEK293 for Antibody Discovery, Partial (29-258aa) | Human | Partial |
| MP1286J | CD80 | Magic™ Membrane Protein Human CD80 (CD80 molecule) expressed in CHO cells for Antibody Discovery | Human | Partial |
| MPX0421K | LAG-3 | Magic™ Membrane Protein Human LAG3 (Lymphocyte activating 3) Expressed in NS0 for Antibody Discovery, Partial (23-450aa) | Human | Partial |
| MP0128J | TIGIT | Magic™ Membrane Protein Human TIGIT (T cell immunoreceptor with Ig and ITIM domains) for Antibody Discovery | Human | Partial |
| MPX0552K | TIGIT | Magic™ Membrane Protein Human TIGIT (T cell immunoreceptor with Ig and ITIM domains) Expressed in HEK293 for Antibody Discovery, Partial (22-141aa) | Human | Partial |
| MPX0553K | TIGIT | Magic™ Membrane Protein Human TIGIT (T cell immunoreceptor with Ig and ITIM domains) Expressed in CHO for Antibody Discovery, Partial (22-141aa) | Human | Partial |
| MP1493J | TIM-3 | Magic™ Membrane Protein Human HAVCR2 (Hepatitis A virus cellular receptor 2, 22-200aa) with C-FC-Avi for Antibody Discovery | Human | Partial |
| MP1497J | TIM-3 | Magic™ Membrane Protein Mouse Havcr2 (Hepatitis A virus cellular receptor 2) for Antibody Discovery | Mouse | Partial |

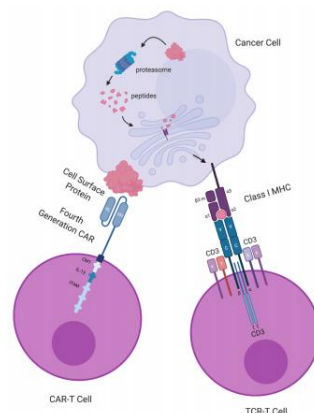
[DISCOVER MORE IMMUNE CHECKPOINT PRODUCTS](#)

MEMBRANE PROTEIN PRODUCTS

CAR-T Therapy Target Proteins

The chimeric antigen receptor T (CAR-T) cell therapy is a new treatment for a variety of cancers. The idea is to take the T-cells from the patient, and genetically engineer the cells to express a chimeric antigen receptor (CAR) which recognizes a specific tumor-associated antigen (TAA).

Creative Biolabs developed an extensive collection of recombinant proteins to support CAR-T therapy development, including full-length protein, partial protein, and made-to-order protein. Please feel free to [contact us](#) to learn more products and custom production.



CAR-T Therapy Target Full Length Protein

| CAT# | Target | Product Name | Species | Protein Length |
|--------------------------|---------|--|---------|----------------|
| MPO181X | CD19 | Magic™ Membrane Protein Human CD19 (CD19 molecule) without tag for Antibody Discovery | Human | Full Length |
| MPO182X | CD19 | Magic™ Membrane Protein Human CD19 (CD19 molecule) with GST-tag for Antibody Discovery | Human | Full Length |
| MPO903J | CD22 | Magic™ Membrane Protein Human CD22 (CD22 molecule) for Antibody Discovery | Human | Full Length |
| MPO045Q | CD22 | Magic™ Membrane Protein Human CD22 (CD22 molecule) expressed in CHO for Antibody Discovery | Human | Full Length |
| MPO244J | CD33 | Magic™ Membrane Protein Human CD33 (CD33 molecule) for Antibody Discovery | Human | Full Length |
| MPO638J | CD33 | Magic™ Membrane Protein Human CD33 (CD33 molecule) | Human | Full Length |
| MPO644J | CD70 | Magic™ Membrane Protein Human CD70 (CD70 molecule) | Human | Full Length |
| MPO549X | IL13RA2 | Magic™ Membrane Protein Human IL13RA2 (Interleukin 13 receptor subunit alpha 2) for Antibody Discovery | Human | Full Length |
| MPC1432K | CD19 | Magic™ Membrane Protein Human CD19 (CD19 molecule) Full Length | Human | Full Length |
| MPC4006K | CD22 | Magic™ Membrane Protein Human CD22 (CD22 molecule) Full Length | Human | Full Length |
| MPC2061K | CD70 | Magic™ Membrane Protein Human CD70 (CD70 molecule) Full Length | Human | Full Length |
| MPC4130K | IL13RA2 | Magic™ Membrane Protein Human IL13RA2 (Interleukin 13 receptor subunit alpha 2) Full Length | Human | Full Length |

[DISCOVER MORE CAR-T THERAPY TARGET PRODUCTS](#)

MEMBRANE PROTEIN PRODUCTS

CAR-T Therapy Target Partial Protein

| CAT# | Target | Product Name | Species | Protein Length |
|--------------------------|---------|--|---------|----------------|
| MP1476J | CD19 | Magic™ Membrane Protein Human CD19 (CD19 molecule, 20-291aa) for Antibody Discovery | Human | Partial |
| MPX0162K | CD19 | Magic™ Membrane Protein Human CD19 (CD19 molecule) Expressed in CHO for Antibody Discovery, Partial (21-291aa) | Human | Partial |
| MP1507J | CD22 | Magic™ Membrane Protein Human CD22 (CD22 molecule, 20-687aa) for Antibody Discovery | Human | Partial |
| MPX0723K | CD22 | Magic™ Membrane Protein Human CD22 (CD22 molecule) Expressed in CHO for Antibody Discovery, Partial (20-687aa) | Human | Partial |
| MPX0724K | CD22 | Magic™ Membrane Protein Human CD22 (CD22 molecule) Expressed in NSO for Antibody Discovery, Partial (20-687aa) | Human | Partial |
| MPX0719K | CD33 | Magic™ Membrane Protein Human CD33 (CD33 molecule) Expressed in CHO for Antibody Discovery, Partial (17-259aa) | Human | Partial |
| MPX0720K | CD33 | Magic™ Membrane Protein Human CD33 (CD33 molecule) Expressed in NSO for Antibody Discovery, Partial (18-259aa, V257L) | Human | Partial |
| MPX0214K | CD38 | Magic™ Membrane Protein Human CD38 (CD38 molecule) Expressed in NSO for Antibody Discovery, Partial (43-300aa) | Human | Partial |
| MP1216J | CD4 | Magic™ Membrane Protein Human CD4 (CD4 molecule) for Antibody Discovery | Human | Partial |
| MPX0339K | CD7 | Magic™ Membrane Protein Human CD7 (CD7 molecule) Expressed in HEK293 for Antibody Discovery, Partial (26-180aa) | Human | Partial |
| MP0048Q | CD70 | Magic™ Membrane Protein Human CD70 (CD70 molecule) expressed in CHO with His tag for Antibody Discovery | Human | Partial |
| MP0043Q | CD70 | Magic™ Membrane Protein Human CD70 (CD70 molecule) expressed in CHO for Antibody Discovery | Human | Partial |
| MP0060Q | CD70 | Magic™ Membrane Protein Human CD70 (CD70 molecule) expressed in CHO with HPLC analysis for Antibody Discovery | Human | Partial |
| MPX0765K | IL13RA2 | Magic™ Membrane Protein Human IL13RA2 (Interleukin 13 receptor subunit alpha 2) Expressed in CHO for Antibody Discovery, Partial (1-342aa) | Human | Partial |
| MP0195X | CD5 | Magic™ Membrane Protein Human CD5 (CD5 molecule) for Antibody Discovery | Human | Partial |
| MPX0439K | CD5 | Magic™ Membrane Protein Human CD5 (CD5 molecule) Expressed in NSO for Antibody Discovery, Partial (25-371aa) | Human | Partial |
| MP1499J | EGFR | Magic™ Membrane Protein Human EGFR (Epidermal growth factor receptor, 25-645aa) for Antibody Discovery | Human | Partial |
| MPX0144K | EGFR | Magic™ Membrane Protein Human EGFR (Epidermal growth factor receptor) Expressed in HEK293 for Antibody Discovery, Partial (25-645aa) | Human | Partial |

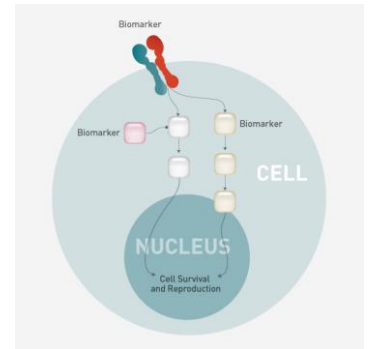
[DISCOVER MORE CAR-T THERAPY TARGET PRODUCTS](#)

MEMBRANE PROTEIN PRODUCTS

Biomarkers and CD Proteins

Biomarker is a substance that exists in a living organism, which is usually used to measure the transformation of biological system, organ, tissue, subcellular structure, or their function. Biomarkers also measure the diagnosis of disease, dividing the stage of disease, which can be used to evaluate the effect and safety of the new pharmacy and therapy on humans.

Creative Biolabs provides biomarkers and CD recombinant proteins, including full-length protein, partial protein, and made-to-order protein. Please feel free to [contact us](#) to learn more products and custom production.



Biomarkers and CD Full Length Protein

| CAT# | Product Name | Species | Protein Length |
|--------------------------|--|---------|----------------|
| MP0831J | Magic™ Membrane Protein Human CSF1R (Colony stimulating factor 1 receptor) | Human | Full Length |
| MP1120J | Magic™ Membrane Protein Human ERBB3 (Erb-b2 receptor tyrosine kinase 3) for Antibody Discovery | Human | Full Length |
| MP0080Q | Magic™ Membrane Protein Human ERBB3 (Erb-b2 receptor tyrosine kinase 3, transcript variant 1) expressed in Sf9 for Antibody Discovery | Human | Full Length |
| MP0672J | Magic™ Membrane Protein Human ERBB4 (Erb-b2 receptor tyrosine kinase 4) | Human | Full Length |
| MP0077Q | Magic™ Membrane Protein Human ERBB4 (Erb-b2 receptor tyrosine kinase 4, transcript variant JM-a/CVT-2) expressed in Sf9 for Antibody Discovery | Human | Full Length |
| MP0664J | Magic™ Membrane Protein Human ERBB2 (Erb-b2 receptor tyrosine kinase 2) | Human | Full Length |
| MP0335X | Magic™ Membrane Protein Human ERBB2 (Erb-b2 receptor tyrosine kinase 2) with His-Flag tag for Antibody Discovery | Human | Full Length |
| MP0336X | Magic™ Membrane Protein Human ERBB2 (Erb-b2 receptor tyrosine kinase 2) with GST tag for Antibody Discovery | Human | Full Length |
| MP0368J | Magic™ Membrane Protein Human CD83 (CD83 molecule) | Human | Full Length |
| MP0428J | Magic™ Membrane Protein Human CD53 (CD53 molecule) | Human | Full Length |
| MPX2307K | Magic™ Membrane Protein Human CD151 (CD151 molecule (Raph blood group)) Expressed in vitro <i>E.coli</i> expression system, Full Length | Human | Full Length |
| MPX2377K | Magic™ Membrane Protein Human CD37 (CD37 molecule) Expressed in vitro <i>E.coli</i> expression system, Full Length | Human | Full Length |

[DISCOVER MORE BIOMARKERS AND CD PRODUCTS](#)

MEMBRANE PROTEIN PRODUCTS

Biomarkers and CD Partial Protein

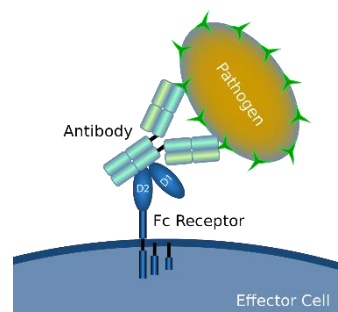
| CAT# | Product Name | Species | Protein Length |
|--------------------------|---|---------|----------------|
| MP0916J | Magic™ Membrane Protein Human EGFR (Epidermal growth factor receptor) for Antibody Discovery | Human | Partial |
| MP1272J | Magic™ Membrane Protein Human EGFR (Epidermal growth factor receptor) expressed in sf9 cells for Antibody Discovery | Human | Partial |
| MP0067Q | Magic™ Membrane Protein Human EGFR (Epidermal growth factor receptor) expressed in CHO for Antibody Discovery | Human | Partial |
| MP0127Q | Magic™ Membrane Protein Human CSF1R (Colony stimulating factor 1 receptor) expressed in Sf9 for Antibody Discovery | Human | Partial |
| MP0323X | Magic™ Membrane Protein Human EFNA3 (Ephrin A3) for Antibody Discovery | Human | Partial |
| MPX0273K | Magic™ Membrane Protein Human ERBB3 (Erb-b2 receptor tyrosine kinase 3) Expressed in NS0 for Antibody Discovery, Partial (20-643aa) | Human | Partial |
| MPX0093K | Magic™ Membrane Protein Human ERBB4 (Erb-b2 receptor tyrosine kinase 4) Expressed in NS0 for Antibody Discovery, Partial (26-649aa) | Human | Partial |
| MP0075Q | Magic™ Membrane Protein Human ERBB2 (Erb-b2 receptor tyrosine kinase 2, residues 676-1255aa) expressed in Sf9 for Antibody Discovery | Human | Partial |
| MP0082Q | Magic™ Membrane Protein Human ERBB2 (Erb-b2 receptor tyrosine kinase 2, residues 23-652aa) expressed in Sf9 for Antibody Discovery | Human | Partial |
| MPX0212K | Magic™ Membrane Protein Human ERBB2 (Erb-b2 receptor tyrosine kinase 2) Expressed in HEK293 for Antibody Discovery, Partial (22-652aa) | Human | Partial |
| MPX0213K | Magic™ Membrane Protein Human ERBB2 (Erb-b2 receptor tyrosine kinase 2) Expressed in NS0 for Antibody Discovery, Partial (23-652aa) | Human | Partial |
| MPX0104K | Magic™ Membrane Protein Human CD81 (CD81 molecule) Expressed in CHO for Antibody Discovery, Partial (113-201aa) | Human | Partial |
| MPX0391K | Magic™ Membrane Protein Human CD274 (CD274 molecule) Expressed in NS0 for Antibody Discovery, Partial (19-239aa) | Human | Partial |
| MPX0396K | Magic™ Membrane Protein Human CD34 (CD34 molecule) Expressed in CHO for Antibody Discovery, Partial (32-290aa) | Human | Partial |
| MPX0419K | Magic™ Membrane Protein Human CD36 (CD36 molecule) Expressed in Baculovirus/Insect expression system for Antibody Discovery, Partial (30-439aa) | Human | Partial |
| MPX0464K | Magic™ Membrane Protein Human CD46 (CD46 molecule) Expressed in CHO for Antibody Discovery, Partial (35-328aa) | Human | Partial |

[DISCOVER MORE BIOMARKERS AND CD PRODUCTS](#)

Fc Receptor Proteins

An Fc receptor is a protein found on the surface of certain cells that contribute to the protective functions of the immune system. Fc receptors bind to antibodies that are attached to infected cells or invading pathogens. Their activity stimulates phagocytic or cytotoxic cells to destroy microbes or infected cells by antibody-mediated phagocytosis or antibody-dependent cell-mediated cytotoxicity.

Creative Biolabs offers a comprehensive collection of recombinant Fc receptor proteins, including their common variants, to expedite your antibody drug development.



Fc Receptor Full Length Protein

| CAT# | Product Name | Species | Protein Length |
|--------------------------|---|---------|-------------------------------|
| MPX0927K | Magic™ Membrane Protein Mouse FcγR1a (Fc receptor, IgE, high affinity I, alpha polypeptide) Expressed in vitro <i>E.coli</i> expression system, Full Length | Mouse | Full Length |
| MP0093J | Magic™ Membrane Protein Human FCGR1 (Fc fragment of IgG receptor and transporter) for Antibody Discovery | Human | Full Length |
| MP0160J | Magic™ Membrane Protein Human FCRL4 (Fc receptor like 4) for Antibody Discovery | Human | Full Length |
| MP0651J | Magic™ Membrane Protein Human FCGR3A (Fc fragment of IgG receptor IIIa) | Human | Full Length |
| MP0675J | Magic™ Membrane Protein Human FCRLA (Fc receptor like A) | Human | Full Length |
| MP0770J | Magic™ Membrane Protein Human FCGR2B (Fc fragment of IgG receptor IIb) | Human | Full Length |
| MP0880J | Magic™ Membrane Protein Human FCRL2 (Fc receptor like 2) | Human | Full Length |
| MP1115J | Magic™ Membrane Protein Human FCGR2B (Fc fragment of IgG receptor IIb) for Antibody Discovery | Human | Full Length |
| MPX3760K | Magic™ Membrane Protein Human FCGR3A (Fc fragment of IgG receptor IIIa) Expressed in vitro <i>E.coli</i> expression system, Full Length of Mature Protein | Human | Full Length of Mature Protein |
| MPX3786K | Magic™ Membrane Protein Human FCAR (Fc fragment of IgA receptor) Expressed in vitro <i>E.coli</i> expression system, Full Length of Mature Protein | Human | Full Length of Mature Protein |
| MPX3787K | Magic™ Membrane Protein Human FCGR2B (Fc fragment of IgG receptor IIb) Expressed in vitro <i>E.coli</i> expression system, Full Length of Mature Protein | Human | Full Length of Mature Protein |

[DISCOVER MORE FC RECEPTOR PRODUCTS](#)

MEMBRANE PROTEIN PRODUCTS

Fc Receptor Partial Protein

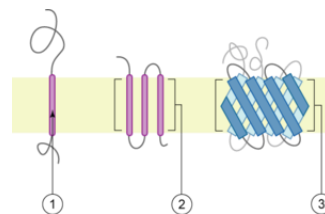
| CAT# | Product Name | Species | Protein Length |
|--------------------------|--|---------|----------------|
| MPO102Q | Magic™ Membrane Protein Human FCER2 (Fc fragment of IgE receptor II) expressed in Sf9 for Antibody Discovery | Human | Partial |
| MPO093J | Magic™ Membrane Protein Human FCGRT (Fc fragment of IgG receptor and transporter) for Antibody Discovery | Human | Partial |
| MPO160J | Magic™ Membrane Protein Human FCRL4 (Fc receptor like 4) for Antibody Discovery | Human | Partial |
| MP1115J | Magic™ Membrane Protein Human FCGR2B (Fc fragment of IgG receptor IIB) for Antibody Discovery | Human | Partial |
| MPO354X | Magic™ Membrane Protein Human FCAMR (Fc fragment of IgA and IgM receptor) for Antibody Discovery | Human | Partial |
| MPX0094K | Magic™ Membrane Protein Human FCGRT (Fc fragment of IgG receptor and transporter) Expressed in HEK293 for Antibody Discovery, Partial (24-297aa) | Human | Partial |
| MPX0206K | Magic™ Membrane Protein Human FCGR2B (Fc fragment of IgG receptor IIB) Expressed in NS0 for Antibody Discovery, Partial (46-217aa) | Human | Partial |
| MPX0304K | Magic™ Membrane Protein Human FCER2 (Fc fragment of IgE receptor II) Expressed in NS0 for Antibody Discovery, Partial (48-321aa) | Human | Partial |
| MPX0328K | Magic™ Membrane Protein Human FCRL2 (Fc receptor like 2) Expressed in NS0 for Antibody Discovery, Partial (20-395aa) | Human | Partial |
| MPX0405K | Magic™ Membrane Protein Human FCGR1A (Fc fragment of IgG receptor IA) Expressed in NS0 for Antibody Discovery, Partial (16-288aa) | Human | Partial |
| MPX0413K | Magic™ Membrane Protein Human FCRL4 (Fc receptor like 4) Expressed in CHO for Antibody Discovery, Partial (18-385aa) | Human | Partial |
| MPX0520K | Magic™ Membrane Protein Human FCAMR (Fc fragment of IgA and IgM receptor) Expressed in CHO for Antibody Discovery, Partial (17-450aa) | Human | Partial |
| MPX0812K | Magic™ Membrane Protein Human FCMR (Fc fragment of IgM receptor) Expressed in HEK293 for Antibody Discovery, Partial (18-251aa) | Human | Partial |
| MPX0556K | Magic™ Membrane Protein Human FCRL3 (Fc receptor like 3) Expressed in NS0 for Antibody Discovery, Partial (14-569aa) | Human | Partial |
| MPX0433K | Magic™ Membrane Protein Human FCAR (Fc fragment of IgA receptor) Expressed in NS0 for Antibody Discovery, Partial (22-227aa) | Human | Partial |
| MPX0430K | Magic™ Membrane Protein Human FCRL5 (Fc receptor like 5) Expressed in NS0 for Antibody Discovery, Partial (16-844aa) | Human | Partial |

[DISCOVER MORE FC RECEPTOR PRODUCTS](#)

MEMBRANE PROTEIN PRODUCTS

Other Products

With years of experience in membrane protein, Creative Biolabs offers over 10,000 membrane protein products, including full-length recombinant proteins, partial recombinant proteins, and made-to-order proteins. Creative Biolabs' service of membrane protein expression and purification can fit your specific requirements.



1TM Membrane Protein in VLPs

| CAT# | Product Name | Species | Protein Length |
|---------------------------|--|---------|----------------|
| MPVLP-029 | Magic™ Recombinant Human ALK2 Membrane Protein in Virus-Like Particles (MP-VLPs) | Human | Full Length |
| MPVLP-030 | Magic™ Recombinant Human CD19 Membrane Protein in Virus-Like Particles (MP-VLPs) | Human | Full Length |
| MPVLP-031 | Magic™ Recombinant Human CD27 Membrane Protein in Virus-Like Particles (MP-VLPs) | Human | Full Length |
| MPVLP-032 | Magic™ Recombinant Human DC-SIGN Membrane Protein in Virus-Like Particles (MP-VLPs) | Human | Full Length |
| MPVLP-033 | Magic™ Recombinant Human DC-SIGNR Membrane Protein in Virus-Like Particles (MP-VLPs) | Human | Full Length |
| MPVLP-034 | Magic™ Recombinant Human LRP6 Membrane Protein in Virus-Like Particles (MP-VLPs) | Human | Full Length |
| MPVLP-035 | Magic™ Recombinant Human TL1A Membrane Protein in Virus-Like Particles (MP-VLPs) | Human | Full Length |
| MPVLP-036 | Magic™ Recombinant Mouse TL1A Membrane Protein in Virus-Like Particles (MP-VLPs) | Mouse | Full Length |
| MPVLP-037 | Magic™ Recombinant Human ST2L Membrane Protein in Virus-Like Particles (MP-VLPs) | Human | Full Length |

[DISCOVER MORE MEMBRANE PROTEIN PRODUCTS](#)

1TM Cell-based Membrane Protein

| CAT# | Product Name | Species | Protein Length |
|--------------------------|---|---------|----------------|
| MPX0008K | Magic™ Membrane Protein Human CLIC1 (Chloride intracellular channel 1) Expressed in <i>E.coli</i> , Full Length | Human | Full Length |
| MPX0009K | Magic™ Membrane Protein Human CLIC4 (Chloride intracellular channel 4) Expressed in <i>E.coli</i> , Full Length | Human | Full Length |
| MPX0055K | Magic™ Membrane Protein Human CDH5 (Cadherin 5) Expressed in NS0 for Antibody Discovery, Partial (48-593aa) | Human | Partial |

[DISCOVER MORE MEMBRANE PROTEIN PRODUCTS](#)

MEMBRANE PROTEIN PRODUCTS

1TM Cell-based Membrane Protein

| CAT# | Product Name | Species | Protein Length |
|--------------------------|--|---------|----------------|
| MPX0519K | Magic™ Membrane Protein Human PRTG (Protogenin) Expressed in NS0 for Antibody Discovery, Partial (36-952aa) | Human | Partial |
| MPX0520K | Magic™ Membrane Protein Human FCAMR (Fc fragment of IgA and IgM receptor) Expressed in CHO for Antibody Discovery, Partial (17-450aa) | Human | Partial |
| MPX0521K | Magic™ Membrane Protein Human KIR2DL2 (Killer cell immunoglobulin like receptor, two Ig domains and long cytoplasmic tail 2) Expressed in NS0 for Antibody Discovery, Partial (22-245aa) | Human | Partial |
| MPX0333K | Magic™ Membrane Protein Human NPR2 (Natriuretic peptide receptor 2) Expressed in NS0 for Antibody Discovery, Partial (23-458aa) | Human | Partial |
| MP0339J | Magic™ Membrane Protein Human FAM171A1 (Family with sequence similarity 171 member A1) | Human | Full Length |
| MP0346J | Magic™ Membrane Protein Human GALNT13 (Polypeptide N-acetylgalactosaminyltransferase 13) | Human | Full Length |
| MP0364J | Magic™ Membrane Protein Human CALN1 (Calneuron 1) | Human | Full Length |
| MP0378J | Magic™ Membrane Protein Human FUT8 (Fucosyltransferase 8) | Human | Full Length |

[DISCOVER MORE MEMBRANE PROTEIN PRODUCTS](#)

1TM Cell-free Membrane Protein

| CAT# | Product Name | Species | Protein Length |
|--------------------------|--|---------|----------------|
| MPX1205K | Magic™ Membrane Protein Human GAPT (GRB2 binding adaptor protein, transmembrane) Expressed in vitro <i>E.coli</i> expression system, Full Length | Human | Full Length |
| MPX1207K | Magic™ Membrane Protein Mouse Ndufb8 (NADH:ubiquinone oxidoreductase subunit B8) Expressed in vitro <i>E.coli</i> expression system, Full Length of Mature Protein | Mouse | Full Length |
| MPX1208K | Magic™ Membrane Protein Human NDUF8 (NADH:ubiquinone oxidoreductase subunit B8) Expressed in vitro <i>E.coli</i> expression system, Full Length of Mature Protein | Human | Full Length |
| MPX1550K | Magic™ Membrane Protein Human DIO2 (Iodothyronine deiodinase 2) Expressed in vitro <i>E.coli</i> expression system, Full Length | Human | Full Length |
| MPX1551K | Magic™ Membrane Protein Human RNF217 (Ring finger protein 217) Expressed in vitro <i>E.coli</i> expression system, Full Length | Human | Full Length |
| MPX3742K | Magic™ Membrane Protein Human CNMD (Chondromodulin) Expressed in vitro <i>E.coli</i> expression system, Full Length | Human | Full Length |
| MPX3754K | Magic™ Membrane Protein Human KLRC2 (Killer cell lectin like receptor C2) Expressed in vitro <i>E.coli</i> expression system, Full Length | Human | Full Length |

[DISCOVER MORE MEMBRANE PROTEIN PRODUCTS](#)

MEMBRANE PROTEIN PRODUCTS

4TM Membrane Protein in VLPs

| CAT# | Product Name | Species | Protein Length |
|---------------------------|--|---------|----------------|
| MPVLP-038 | Magic™ Recombinant Human CD81 Membrane Protein in Virus-Like Particles (MP-VLPs) | Human | Full Length |
| MPVLP-039 | Magic™ Recombinant Human CD20 Membrane Protein in Virus-Like Particles (MP-VLPs) | Human | Full Length |
| MPVLP-040 | Magic™ Recombinant Human Claudin-1 Membrane Protein in Virus-Like Particles (MP-VLPs) | Human | Full Length |
| MPVLP-041 | Magic™ Recombinant Human Claudin-3 Membrane Protein in Virus-Like Particles (MP-VLPs) | Human | Full Length |
| MPVLP-042 | Magic™ Recombinant Human Claudin-4 Membrane Protein in Virus-Like Particles (MP-VLPs) | Human | Full Length |
| MPVLP-001 | Magic™ Recombinant Human Claudin 18.2 Membrane Protein in Virus-Like Particles (MP-VLPs) | Human | Full Length |
| MPVLP-002 | Magic™ Recombinant Human CLDN6 Membrane Protein in Virus-Like Particles (MP-VLPs) | Human | Full Length |

[DISCOVER MORE MEMBRANE PROTEIN PRODUCTS](#)

4TM Cell-based Membrane Protein

| CAT# | Product Name | Species | Protein Length |
|--------------------------|---|---------|----------------|
| MPO163J | Magic™ Membrane Protein Human CLDN9 (Claudin 9) for Antibody Discovery | Human | Full Length |
| MPO209J | Magic™ Membrane Protein Human CLDN1 (Claudin 1) for Antibody Discovery | Human | Full Length |
| MPO303J | Magic™ Membrane Protein Human CLDN2 (Claudin 2) | Human | Full Length |
| MPO380J | Magic™ Membrane Protein Human CLDN22 (Claudin 22) | Human | Full Length |
| MPO383J | Magic™ Membrane Protein Human CLDN19 (Claudin 19) | Human | Full Length |
| MPO404J | Magic™ Membrane Protein Human CLDND1 (Claudin domain containing 1) | Human | Full Length |
| MPO436J | Magic™ Membrane Protein Human CLDND2 (Claudin domain containing 2) | Human | Full Length |
| MPO736J | Magic™ Membrane Protein Human CLDN4 (Claudin 4) | Human | Full Length |
| MPX0057K | Magic™ Membrane Protein Human CLDN4 (Claudin 4) Expressed in <i>E.coli</i> for Antibody Discovery, Partial (29-160aa) | Human | Partial |

[DISCOVER MORE MEMBRANE PROTEIN PRODUCTS](#)

MEMBRANE PROTEIN PRODUCTS

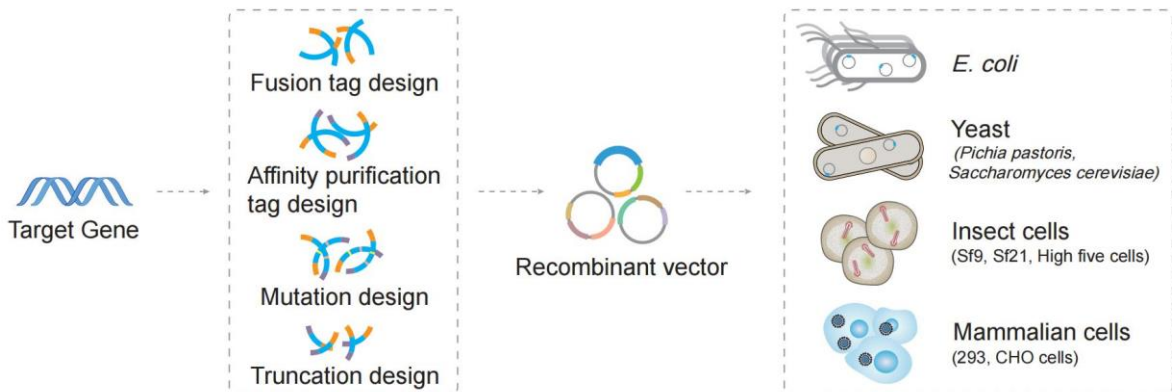
4TM Cell-free Membrane Protein

| CAT# | Product Name | Species | Protein Length |
|--------------------------|---|---------|----------------|
| MPX0844K | Magic™ Membrane Protein Human CLDN6 (Claudin 6) Expressed in vitro <i>E.coli</i> expression system for Antibody Discovery, Partial (1-82aa) | Human | Partial |
| MPX0878K | Magic™ Membrane Protein Human CLDN3 (Claudin 3) Expressed in vitro <i>E.coli</i> expression system, Full Length | Human | Full Length |
| MPX2131K | Magic™ Membrane Protein Human CLDND2 (Claudin domain containing 2) Expressed in vitro <i>E.coli</i> expression system, Full Length | Human | Full Length |
| MPX2189K | Magic™ Membrane Protein Human CLDN24 (Claudin 24) Expressed in vitro <i>E.coli</i> expression system, Full Length | Human | Full Length |
| MPX2198K | Magic™ Membrane Protein Human CLDN11 (Claudin 11) Expressed in vitro <i>E.coli</i> expression system, Full Length | Human | Full Length |
| MPX2203K | Magic™ Membrane Protein Human CLDN4 (Claudin 4) Expressed in vitro <i>E.coli</i> expression system, Full Length | Human | Full Length |
| MPX2207K | Magic™ Membrane Protein Human CLDN1 (Claudin 1) Expressed in vitro <i>E.coli</i> expression system, Full Length | Human | Full Length |
| MPX2214K | Magic™ Membrane Protein Human CLDN9 (Claudin 9) Expressed in vitro <i>E.coli</i> expression system, Full Length | Human | Full Length |
| MPX2220K | Magic™ Membrane Protein Human CLDN20 (Claudin 20) Expressed in vitro <i>E.coli</i> expression system, Full Length | Human | Full Length |
| MPX2221K | Magic™ Membrane Protein Human CLDN22 (Claudin 22) Expressed in vitro <i>E.coli</i> expression system, Full Length | Human | Full Length |
| MPX2222K | Magic™ Membrane Protein Mouse Cldn22 (Claudin 22) Expressed in vitro <i>E.coli</i> expression system, Full Length | Mouse | Full Length |
| MPX2232K | Magic™ Membrane Protein Human CLDN19 (Claudin 19) Expressed in vitro <i>E.coli</i> expression system, Full Length | Human | Full Length |
| MPX2233K | Magic™ Membrane Protein Mouse Cldn19 (Claudin 19) Expressed in vitro <i>E.coli</i> expression system, Full Length | Mouse | Full Length |
| MPX2234K | Magic™ Membrane Protein Human CLDN17 (Claudin 17) Expressed in vitro <i>E.coli</i> expression system, Full Length | Human | Full Length |
| MPX2238K | Magic™ Membrane Protein Human CLDN8 (Claudin 8) Expressed in vitro <i>E.coli</i> expression system, Full Length | Human | Full Length |
| MPX2244K | Magic™ Membrane Protein Human CLDN10 (Claudin 10) Expressed in vitro <i>E.coli</i> expression system, Full Length | Human | Full Length |
| MPX2245K | Magic™ Membrane Protein Human CLDN15 (Claudin 15) Expressed in vitro <i>E.coli</i> expression system, Full Length | Human | Full Length |
| MPX2388K | Magic™ Membrane Protein Human CLDN23 (Claudin 23) Expressed in vitro <i>E.coli</i> expression system, Full Length | Human | Full Length |

[DISCOVER MORE MEMBRANE PROTEIN PRODUCTS](#)

Membrane Protein Expression

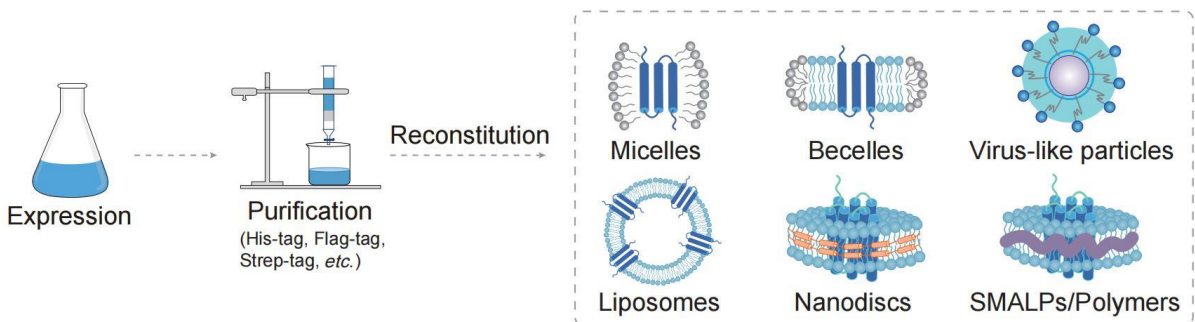
We offer membrane protein production services in various expression systems: *E.coli* expression system, yeast expression system, insect cell expression system, mammalian cell expression system. Before expression and purification, we design different construction strategies to fit your specific requirements.



Membrane Protein Purification

We offer different solubilization and purification strategies to get the membrane proteins in high purity and native conformation.

- For affinity chromatography, we can perform two-step purification or even three-step purification if the purity is low after His tag purification.
- For reconstitution strategies, we offer detergent form, liposome form, nanodisc form, and SMALPs form to fit your requirements

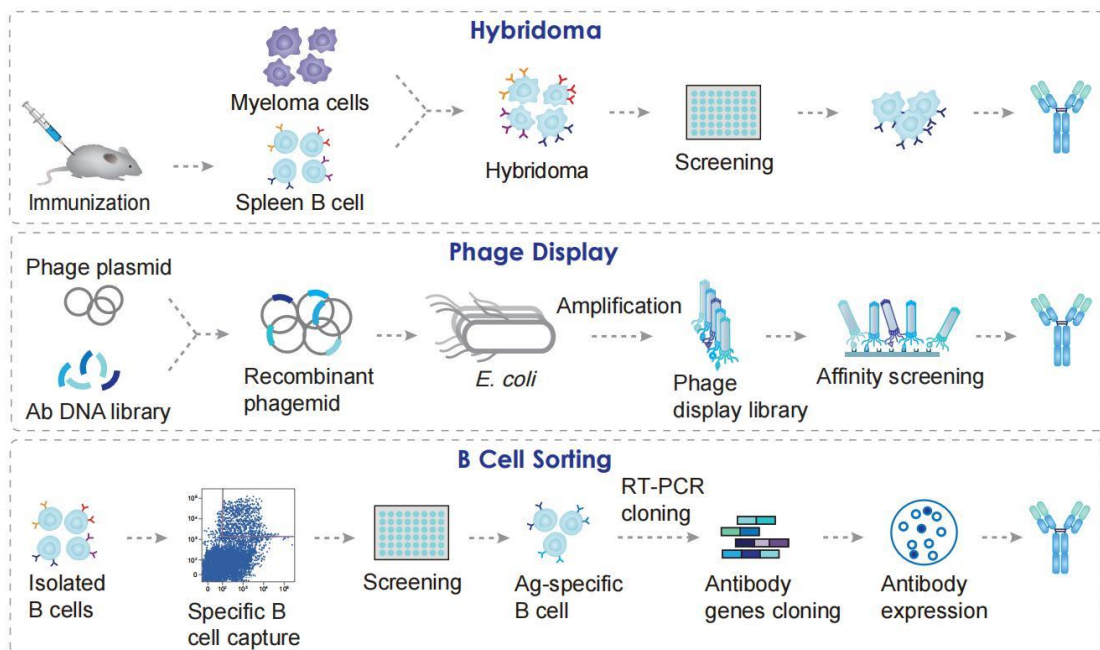


Membrane Protein Production in Wheat Germ Cell-Free Expression System

We provide wheat germ cell-free expression system to produce the membrane proteins in proteoliposome form.

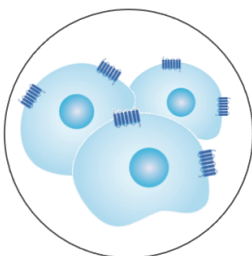
Membrane Protein Antibody Discovery

Creative Biolabs is specialized in antibody discovery, antibody engineering, and antibody production. We have established different platforms to advance antibody discovery, including immunization and hybridoma platform, phage library screening platform, and B cell sorting platform.

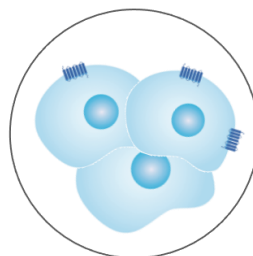


Membrane Protein Stable Cell Line Generation

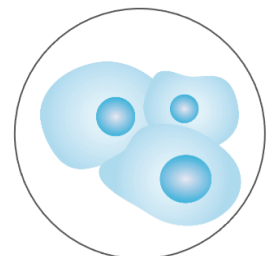
In contrast to transient expression, making stably transfected cell lines is a lengthy process that usually requires the stable integration of the recombinant DNA into the host cell genome. Membrane protein cell lines can be used for membrane protein expression, membrane protein antibody discovery, membrane protein functional studies, membrane protein drug screening, etc. Creative Biolabs offers membrane protein cell lines that can overexpress, knockdown, or knockout the target protein of interest.



Membrane Protein Overexpression
Lentivirus

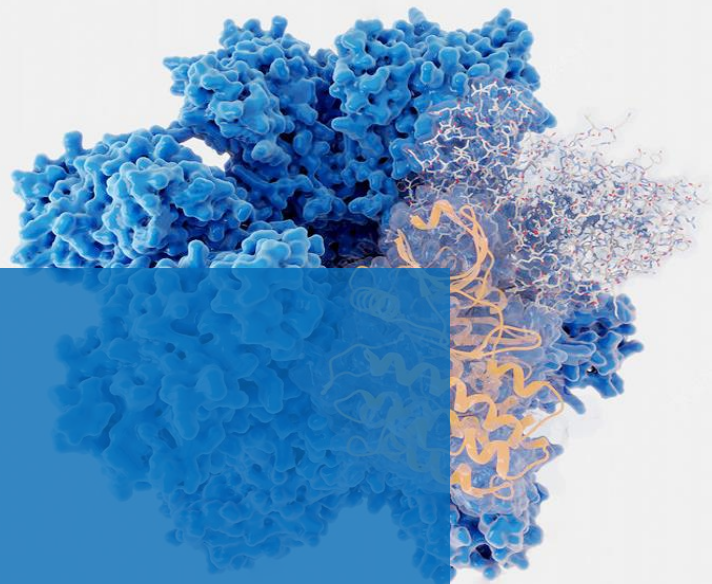


Membrane Protein Knockdown
siRNA
shRNA



Membrane Protein Knockout
CRISPR/Cas9

QUALITY EXPERIENCE DEDICATION



 **Creative Biolabs®**

© 2022 Creative Biolabs. | Contact Us
www.creative-biolabs.com